

## Member profile: Savanna

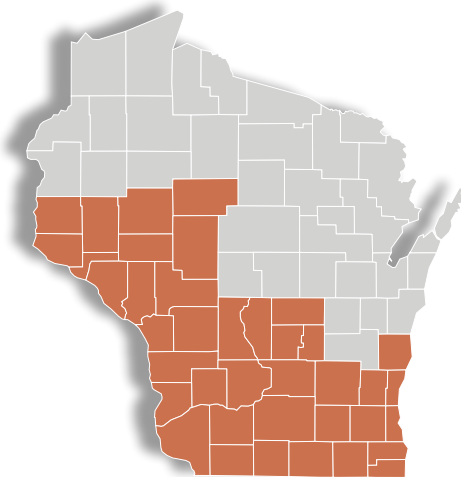


**“I love my job training at the Friendship Cafe. Thank you My Choice Wisconsin for your support.”**

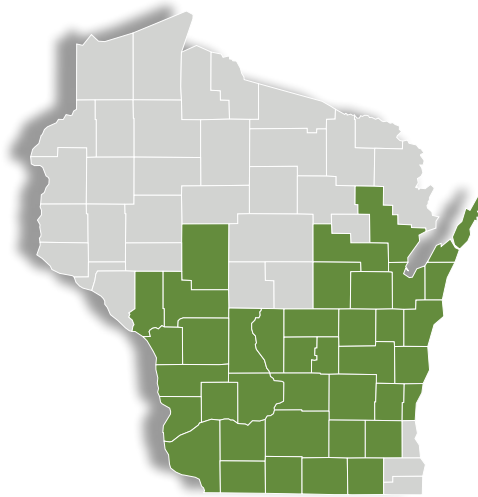
Savanna, Member Since 2017



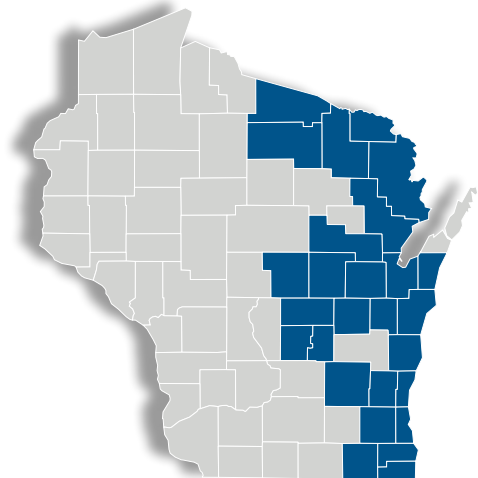
## Program Maps



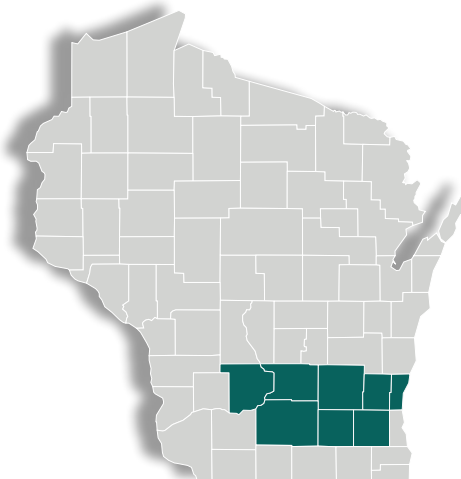
Family Care



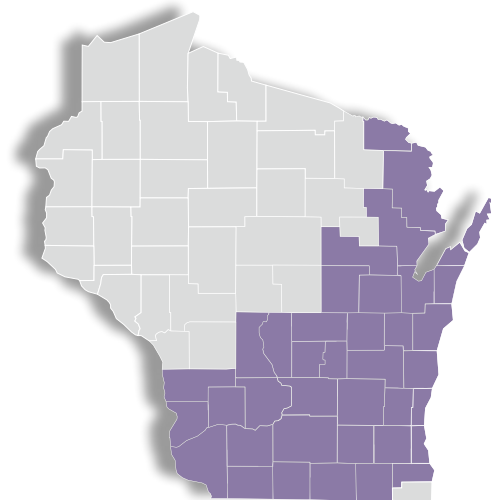
Medicaid SSI



BadgerCare Plus



Partnership



Medicare Dual Advantage

## Contact Information

**Main Office:**  
10201 West Innovation Drive #100  
Wauwatosa, WI 53226

**Direct:** 414-287-7600

**Toll-Free:** 800-963-0035

**Website:** [www.mychoicewi.org](http://www.mychoicewi.org)

**For more contact information view:**  
[mychoicewi.org/about/leadership-team/](http://mychoicewi.org/about/leadership-team/)  
[www.mychoicewi.org/contact/](http://www.mychoicewi.org/contact/)



## Our Mission

We are committed to the improved health of our members and the betterment of our communities. As trusted stewards of public funds, we care for the whole person and well-being of all by offering services that promote independence, value diversity, and inspire self-advocacy.

## SERVE

### Core Values

#### Service

We are committed to service excellence through continuous improvement.

#### Equity

We have genuine respect for all people and believe that everyone should be treated fairly.

#### Respect

We value the rights, wishes and traditions of others. We are accountable and stand behind our commitments.

#### Vision

We aspire to a sustainable future through innovation and a commitment to quality.

#### Empowerment

We help our members take ownership of their health and embrace self-advocacy.

My Choice Wisconsin is a managed care organization with a passion for putting our members first. With five programs across Wisconsin, members receive long-term care and health services to help them live their best lives independently in their own communities. We offer Family Care, Family Care Partnership, Medicare Dual Advantage, Medicaid SSI, and BadgerCare Plus.

A homegrown non-profit, My Choice Wisconsin works collaboratively with local agencies and health care providers to ensure our members have ample choices and high-quality support and services from a diverse network. We provide seamless care for each member based on their own needs, goals, and abilities. With offices in 14 cities throughout Wisconsin, we strive to be a valued partner within all the communities we serve.

My Choice Wisconsin is proud of its long history and is excited to continue serving people throughout Wisconsin for many years to come.

## Member profile: Kayla

As a Project SEARCH graduate now employed in a position she loves, Kayla is full of smiles. Kayla's manager says that she is always willing to help, never misses a beat, and can make a day a lot better!

Kayla, Member Since 2016



# Program Overview

Caring Starts with the Right Support System

## Partnership

- Frail elders and adults with disabilities with higher level of care
- Health and long-term care service coordination
- State Medicaid and Federal Medicare funded

★★★★★ 1,533 members 8 counties

## 5/5 Star Plan ★★★★★

My Choice Wisconsin Health Plan received an overall rating of 5 out of 5 stars for the Partnership and Medicare Dual Advantage plans! Every year, Medicare evaluates plans based on a 5-star rating system. This rating includes performance for Medicare Parts C & D. For more information on CMS Star Ratings, visit [www.medicare.gov](http://www.medicare.gov).

## Family Care

- Frail elders and adults with disabilities
- Home and community-based long-term care service coordination
- State Medicaid funded

15,482 members 39 counties

## Medicare Dual Advantage (HMO SNP)

- Adults who qualify for both Medicaid and Medicare
- Healthcare service coordination plus supplemental benefits like OTC catalog allowance and dental coverage
- Federal Medicare funded

★★★★★ 706 members 38 counties

## Medicaid SSI

- Adults who qualify for Supplemental Security Income (SSI)
- Healthcare service coordination
- State Medicaid funded

3,360 members 39 counties

## BadgerCare Plus

- Parents/caretakers of dependent children and pregnant women that meet certain income requirements, all WI children
- Healthcare service coordination
- State Medicaid funded

23,231 members 27 counties

Membership data as of 7/1/2022



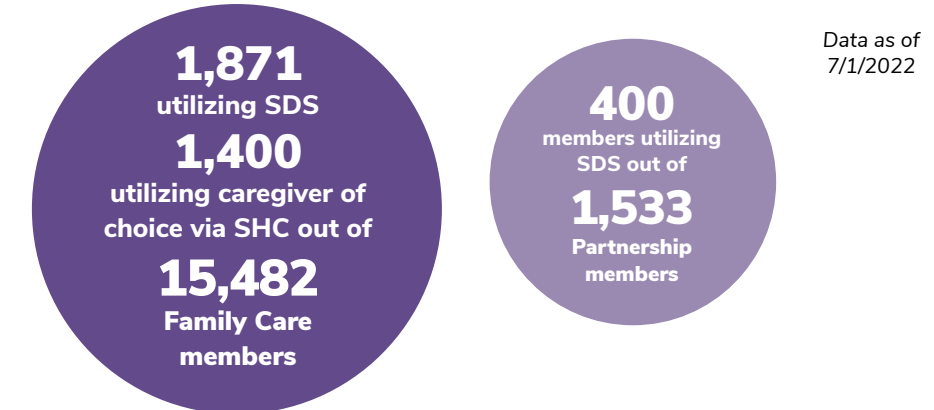
Member profile: **Patrick**

**"I enjoy working at TLP. I've been here over 15 years!"**

Patrick, Member Since 2009

## Self-Directed Supports

Family Care and Partnership members can choose to direct their supports and services. Members note more reliability, continuity, privacy, and dignity when they choose and manage their own providers.



## Providers

Our provider network includes a mix of acute and primary, long-term care, residential and hospital systems. We manage over 10,000 active provider contracts.

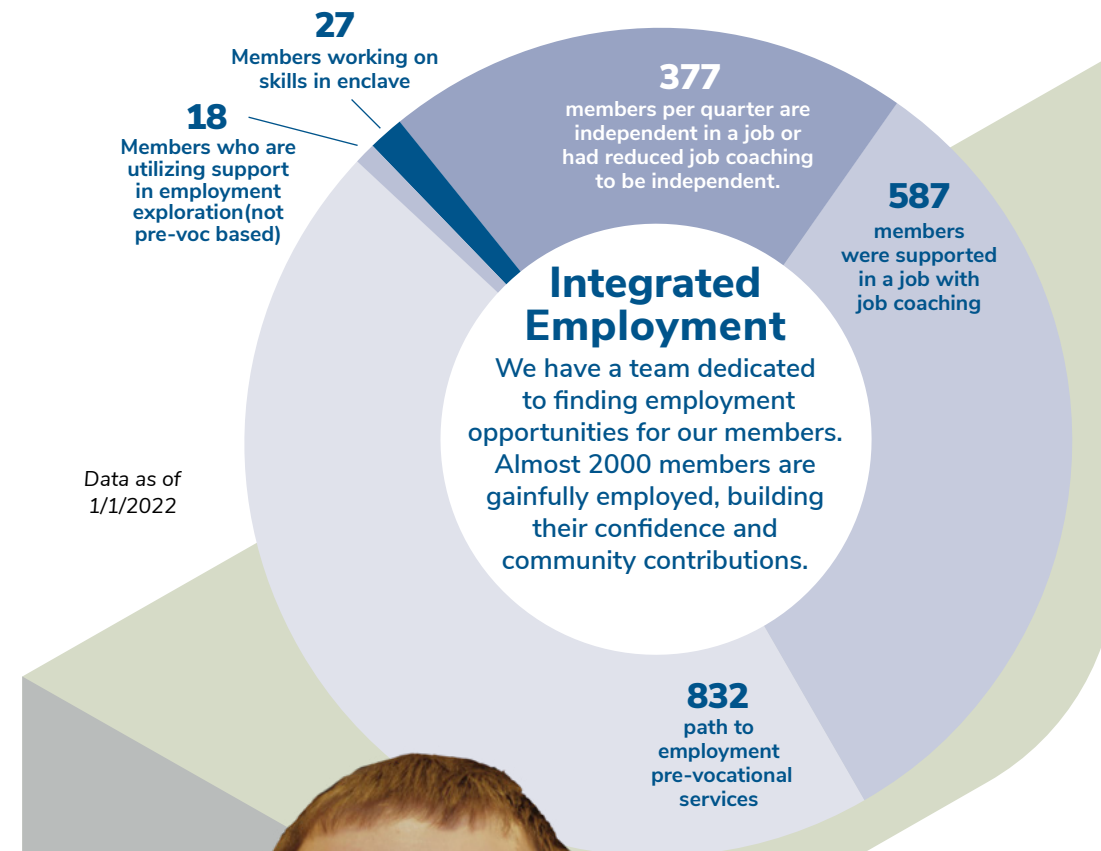
5,188 LTC providers and facilities

Data as of 7/1/2022

130 hospitals

4,858 primary care providers

Data as of 1/1/2022



Member profile: **Nate**

Nate previously won the Kalahari's Employee of the Year Award!

**"I love interacting with people, working with guests & making them happy."**

Nate, Member Since 2015